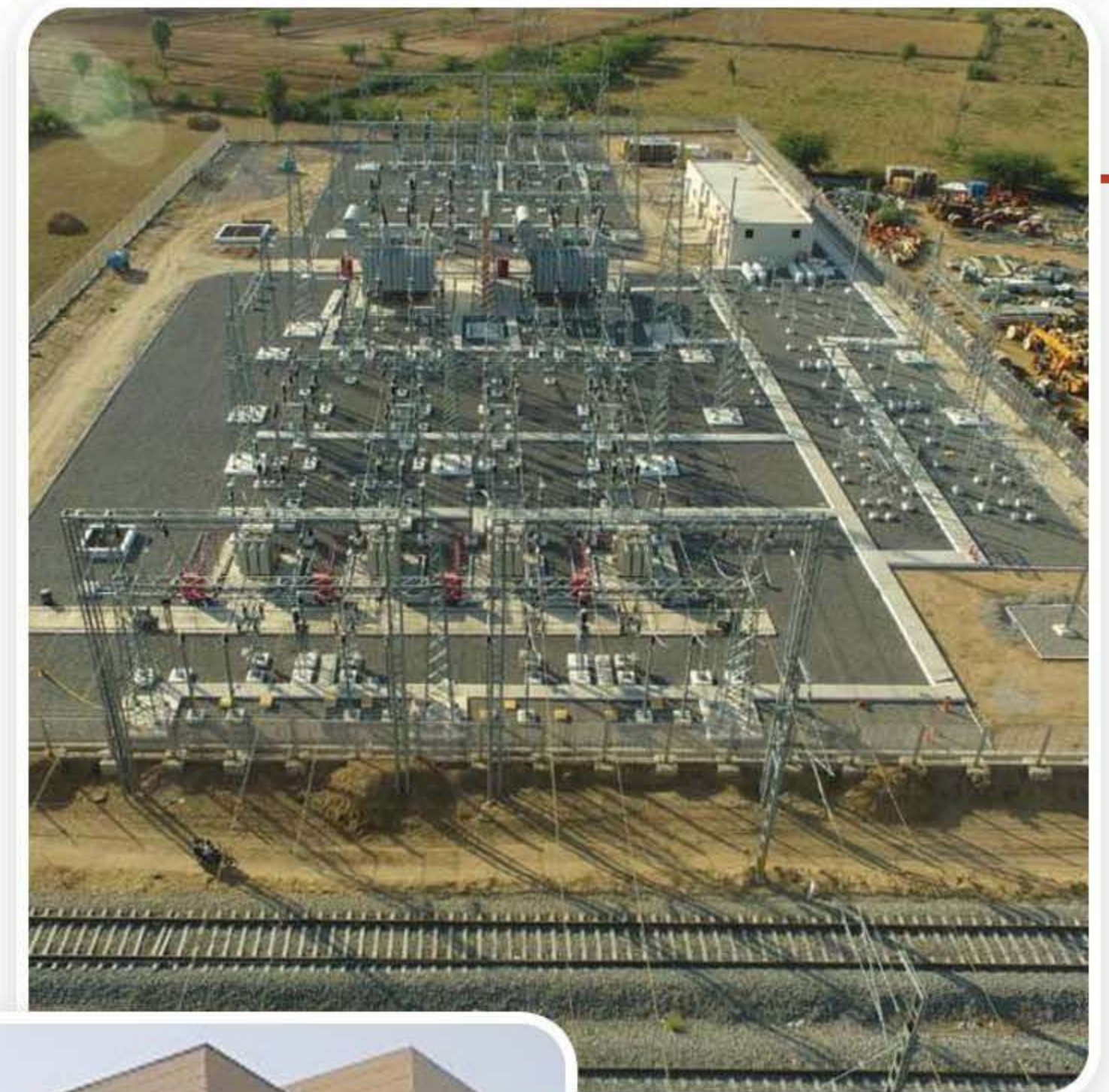




# SIDHIVINAYAK INFRAVENTURES PVT.LTD

SIPL philosophy has remained unchanged for over many years:  
"Deliver a quality work on time and within the budget."



SIDHIVINAYAK INFRAVENTURES PVT.LTD company is a ever growing company, known as "SIPL" with its head office based in Jodhpur (Rajasthan) and branch offices in UP, Gujrat & Delhi, with many of our valued clients spread across India .

The company was established in the year 2017. Before that since 2008 it was two Proprietorship Firms ( Sidhivinayak Enterprises & Rana Contractors) working together and the joint venture of this firms is now known as SIDHIVINAYAK INFRAVENTURES PVT.LTD..

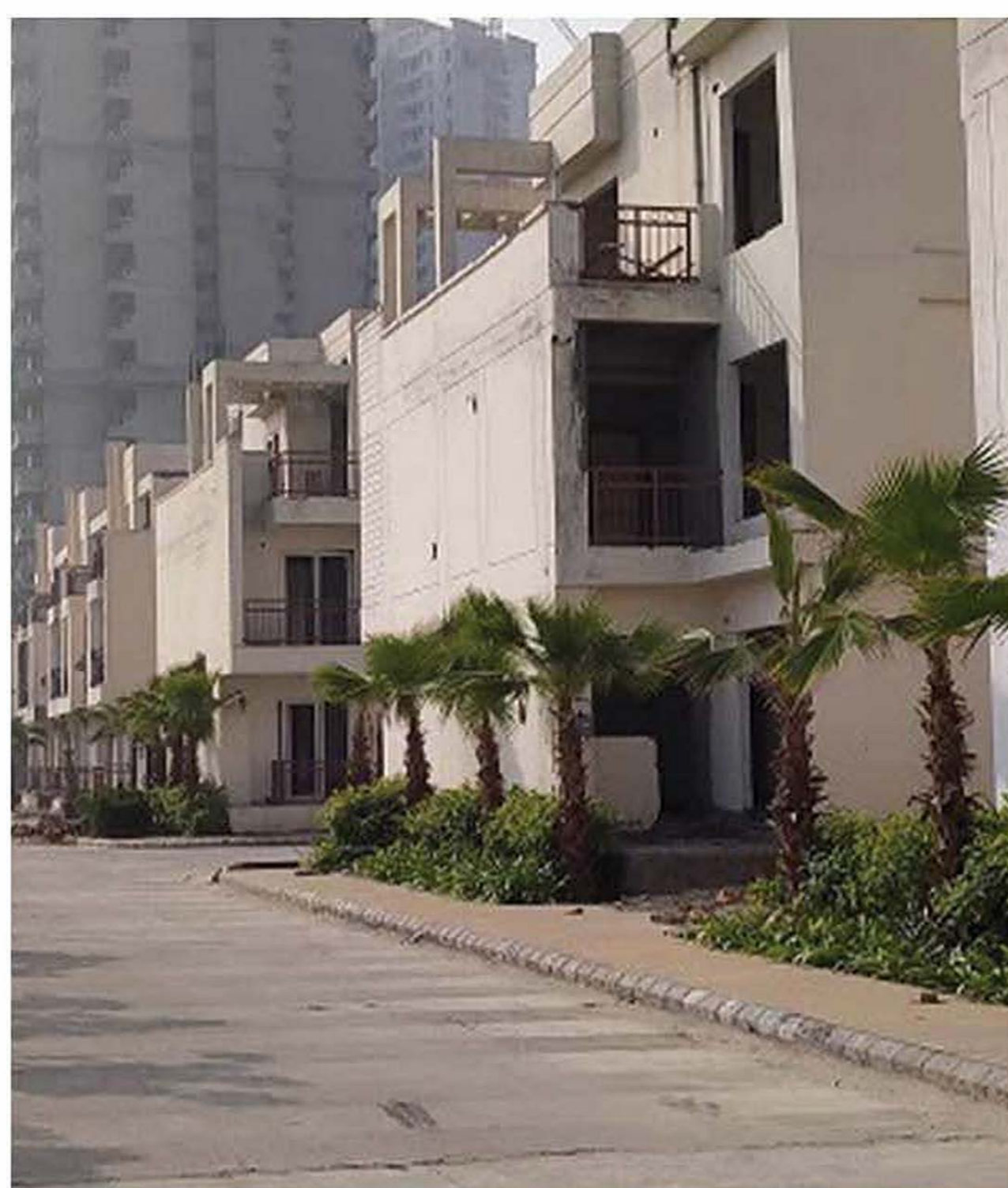
The year experiencing and extending with diversification of company business, now company gearing up to play leading role in the field of contracting services like civil works, electrical works, building constructions and maintenance, Consultancy and Engineering Service, etc . SIPL are to build quality construction projects according to their original specifications, on time and in budget. Architectural craftsmanship, engineering, integrity, honesty, and quality workmanship are what they have built their reputation from last 18 years.

## EXPERTISE

SIPL has deep experience in dreamless sector of civil works, electrical works, building constructions and maintenance, Consultancy and Engineering Service, etc. Since enterprise needs are becoming more challenging, change is more frequent and projects require a variety of skills, we operate cross platform teams for complex projects fusing different technologies. We have our expertise staff, who works on a frame called ""Maximum output, with minimum resources""

## SERVICES

The company serves its customer at every project phase, from strategy formulation through design, project management and implementation right through to support and upgrades. We are committed to best practices and professional integrity to ensure we deliver quality. Customer satisfaction drives every aspect of their commercial contractor business. These time-honoured qualities are incorporated into every project built by SIPL



SIPL, ability to combine the right equipment with our experienced crews and project managers ensures that your site is ready on time – even on an accelerated schedule. Our planning to execute of commercial services successes range from Substations-Railway stations, landfills, Residential-Commercial flats, power plants, railways, residential and industrial complexes. SIPL provides the highest quality of service for just about every type of civil execution projects.

- Earth Works, BT & C.C Road Works
- Civil Building works & Civil Works for GIS Sub-Stations
- Industrial Civil Construction, Railway Civil & Electrical OHE, TSS works
- All Types of Electrical Erection/installation Commissioning Works

## OUR MISSION

Our mission is : To perform for our customers the highest level of quality construction services at fair and market competitive prices. To ensure the longevity of our company through repeat and referral business achieved by customer satisfaction in all areas including timeliness, attention to detail and service-minded attitudes. To maintain the highest levels of professionalism, integrity, honesty and fairness in our relationships with our suppliers, subcontractors, professional associates and customers

## OUR APPROACH TO QUALITY

- # The Quality group is a collection of individuals responsible for implementing SIPL Quality Policy.
- # The Quality group is well supported by the Construction Quality Assurance, Civil Engineering Group, knowledge Management Group, and the Training Group.
- # The Civil Quality Assurance group ensures that the project quality activities are planned and implemented in accordance with our Quality Policy, in all deliverables.
- # The Civil Engineering Group defines, maintains and improves our Quality Management System.
- # The Knowledge Management group ensure latest technology is incorporated in to our Tools, Techniques and Methodologies used to deliver high-quality services to our customers ensure continuous process improvement.

# MANAGEMENT

**Sumer Singh Naruka:** Electrical Engineer having 21 years of Experience in Electrical & Civil Works. (Executive Director)

**Pradeep Singh Rana:** MBA having 19 years of experience in Power infra projects. (Director Finance)

**Pankaj Kumar Pandey:** Electrical Engineer having 21 years of Experience in power infra projects.

**Natwar Singh:** Electrical Engineer (diploma) having 19 years of Experience in power infra projects.

**Project Coordinator: Hitesh Goyal**

**Construction Manager:** Ganesh Jat & Aditya Chaudhary

**Chartered Accountant:** Mr. B.K Vyas

**Tax Consultant:** Adv. Amit Dave

**Sr. Accountants:** Mr. Hari Om Bhambhu & Mr. Tarun Bhati

## Administrative & Contact Information

**Business name:** M/s Sidhivinayak Infraventures Pvt. Ltd.

**CIN No. :** U70109RJ2017PTC057164

**GST No:** Rajasthan: 08AAYCS0981R1Z3

Uttar Pradesh: 09AAYCS0981R1Z1, Chatishgadh 22AAYCS0981R1ZD,

Delhi 07AAYCS0981R1ZS, Jammu 01AAYCS0981R1ZH

**CPWD Enlistment No:** 273 (2023 Class-II Buildings & Road) Class "II"

**RRVPL Enlistment No. 1398 /03/10/2025(Class"A")**

**PWD Enlistment: B-27/ACE-I/PWD/Ju/2021-22**

**Electrical License No.**10189-B

**PAN No. :** AAYCS0981R

**E-mail:** sipljod@gmail.com , [sumer.sipl@gmail.com](mailto:sumer.sipl@gmail.com)

# SAFETY

At SIPL, we have developed a culture that promotes an injury-free environment and provides the safest workplace possible for our employees, subcontractors, clients and others who enter or who near our construction sites. Our mantra is: "Every worker goes home from each of our jobs, every day."

We are dedicated to elevating the standards for safety in the construction industry through a wide variety of methods—from zero-tolerance drug testing to our aggressive fall-protection program, which includes partnering with the leaders in the insurance industry to develop the next generation of fall-protection systems. Through innovative training and education programs, we also provide our employees and subcontractors with the tools, knowledge and resources they need to increase safety, reduce risk and improve loss control on every project we manage.



## COMPANY STAFF (CIVIL DEPARTMENT)

S.No	Designation	No. Of Employee
1	Civil Department Manager	3
2	Construction Manager	5
3	Project Manager	3
4	Project Coordinator	3
5	Site Engineers	6
6	Project Supervisor	8
7	Site Supervisor	8
8	Safety Supervisor	3
9	Foreman	10
10	Surveyor	2
11	Auto Cad Operator	2

# LIST OF INSTRUMENT & EQUIPMENT.

## LIST OF T&P AND MACHINERY

LIST OF T&P AND MACHINERY		
SNO	NAME OF TOOLS & MACHINERY	QTY
1	AJEX FIORI 4.1 CUM	1 NOS
2	PORTABLE OFFICE CONTAINER	1 NOS
3	20 FEET STORAGE CONTAINRS	3 NOS
4	PROP JACKS 2 x 2	300 NOS
5	PROP JACKS 2 x 3	700 NOS
6	TRACTOR WITH TANKER	1 NOS
7	TRACTOR WITH TROLLEY	1 NOS
8	BOLERO CAMPER	1 NOS
9	MOTER CYCLES FOR SITES	07 NOS
10	D.G. SET (30KVA & 20KVA)	2 NOS
11	CONCRETE VIBRATOR	15 NOS
12	PLATE COMPECTOR	6 NOS
13	UNIVERSAL CONCRETE MIXER	5 NOS
14	WELDING MACHINE	6 NOS
15	BAR CUTTING MACHINE	4 NOS
16	BAR MOLDING MACHINE	4 NOS
17	ANGLE GRINDER	10 NOS
18	CHOUP SAW CUTTER	10 NOS
19	LT PANEL BOX	7 NOS
20	DRILL MACHINE HEAVY 3-PHASE	3 NOS
21	HAND DRILL MACHINES	10 NOS
22	LADDERS	22 NOS
23	FLOOD LIGHTS	50 NOS
24	EIECTRICAL TYPES CABLES	4000 MTRS
25	PLY-BOARD SHUTTERS	5500 SQMTR
26	IRON SHUTTER 600x900	1550 SQMTR
27	TIE ROD (1MTR.3 300mm.,600)	1800 MTR
28	U.JACKS	1250 NOS
29	JACK (4M}	1500 NOS
30	AUTO LEVEL WITH SCALE	4 NOS
31	CONCRETE BREAKERS	4 NOS
32	SAFETY HELMETS	200 NOS
33	SCAFF FOLDING 10*30 M	650 MTR

# GLIMPSES OF PROJECTS

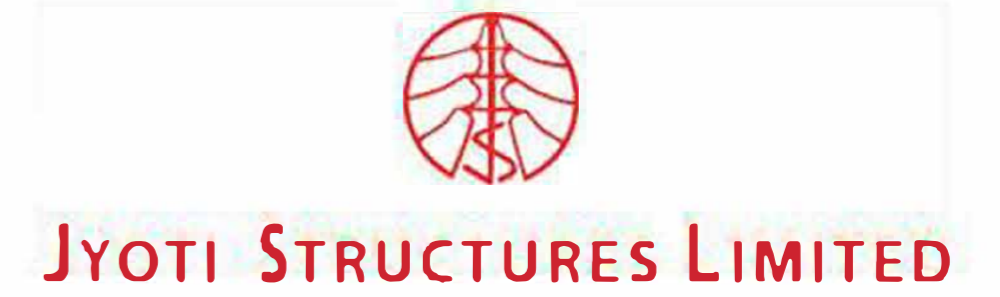
## SOME PROJECT EXPERIENCE

SL.No	Nature of Work	Unit	Qty	Remarks	Client	Location	Status
1	Residential Qtrs.	Nos	52	Type-11, Structure Completed	L&T / DFCC	Uttar Pradesh	Completed
2	OBC Union Building	Nos	1	Size-12mtr*32mtr	L&T / DFCC	Uttar Pradesh	Completed
3	Residential Villas	Nos	12	Each 995Sqft	AJNARA	Uttar Pradesh	Completed
4	220KV TSS	Nos	2	Build up area 60mtr*210mtr	L&T / DFCC	Rajasthan	Completed
5	220 KV-SSP	Nos	8	Build up area 14mtr*45mtr	L&T / DFCC	Rajasthan	Completed
6	33/11 KV Sub Stations	Nos	7	Build up area 16mtr*34mtr	SMSIL/Jd.VVNL	Rajasthan	Completed
7	Water Treatment Plants	Nos	3	Build up area 22mt r*32mt r	ORLVDA	Uttar Pradesh	Completed
8	132KV Bay Extension	Nos	2	Cable trench and Foundations	ABB/Nuvoco Cement Plant	Chaitshgardh	Completed
9	New Railway Stations	Nos	2	Build up area 35mtr*90mtr	L&T / DFCC	Uttar Pradesh	Completed
10	Residential Qtrs.	Nos	12	Type-III	L&T / DFCC	Uttar Pradesh	Completed
11	Railway Institute	Nos	1	Area 25mtr *45mtr	L&T / DFCC	Uttar Pradesh	Completed
12	765MW Solar Plant	Nos	1	Build up area 95mtr*182mtr	Tata Power	Rajasthan	Completed
13	Pond Lining Work	Nos	1	45 *35 Mtrs	Agri. College	Rajasthan	Completed
14	UG Water Tank	Nos	1	3.5 *9 Mtrs	PWD	Rajasthan	Completed
15	Goat Unit Sirohi	Nos	1	20*64 Feet	Agri. University	Rajasthan	Completed
16	Aluminium Partitions	Sqft	1	15000Sqft	NIFT Jodhpur	Rajasthan	Completed
17	66/11 KV S/S Work	Nos	1	Build up area 95mtr*182mtr	Stelmec/BSES	New Delhi	Completed
18	220KV TSS	Nos	2	Build up area 60mtr*210mtr	L&T / DFCC	Gujrat	Completed
19	220 KV-SSP	Nos	5	Build up area 14mtr*45mtr	L&T / DFCC	Gujrat	Completed
20	KVK Building Repair	Nos	1	25*35 Feet	Agri. University	Rajasthan	Completed
21	Residential Flats	Nos	100	985 Sqft	Ajnara	Noida	Completed
22	220KV TSS	Nos	1	Build up area 60mtr*210mtr	Tata Projects Ltd/IR	Pipar(Jodhpur)	Completed
23	Tower Wagon Shed	Nos	1	Build up area 26mtr*170mtr	Tata Projects Ltd/IR	Pipar(Jodhpur)	Completed
24	Staff Quarters Type-II & Type-III	Nos	9	1469 Sqmtr Buildup Area	Tata Projects Ltd/IR	Pipar(Jodhpur)	Completed
25	Sports Complex	Nos	1	1152 Sqmtr Buildup Area	CPWD	IIM Udaipur	Completed
26	Boundary wall & Road Works	Job	1LS	Main Client IR (77Lac)	TATA Projects	Pipar(Jodhpur)	Completed
27	Staff Quarters Type IV	Job	1	Main Client IR (28Lac)	TATA Projects	Pipar(Jodhpur)	Completed
28	Cont. of 132 KV GIS Sub-Station at Lal Sagar (Civil & Electrical)	Job	1	RRV PNL (362 Lac)	Rajesh Power Services Limited	Jodhpur City	Completed
29	Cont. of 132 KV GIS Sub-Station at SMS Hospital (Civil & Electrical)	Job	1	RRV PNL (296 Lac)	Sterlite Power Transmission Ltd	Jaipur City	Completed

## RUNNING PROJECTS

OUR RUNNING PROJECTS								
SL.No	Nature of Work	Unit	Qty	Remarks	Work Order Amount(In Lacs)	Client	Location	Status
1	Cont. of 132 KV GIS Sub-Station at Pratap Nagar,Jaipur (Civil & Electrical	Job	1	RRVPNL	450	Rajesh Power Services Limited	Jaipur	WIP
2	Construction of guard hut store and boundary wall at 132 kV GSS Gidani Dudu Jaipur	Job	1	RRVPNL	110	RRVPNL	Jaipur	WIP
3	Cont. of 220 KV Transformer Foundation and other Civil Works	Job	1	RRVPNL	53	RRVPNL	Bhilwara	WIP
4	33KV/132KV POWER POLING SB-STN	Job	1	Solar EPC	150	LCC Engineering Pvt Ltd	Mathaniya Jodhpur	WIP
5	132KV Palli GSS,	Job	1	Solar EPC	22	Pioneer Industrial Safety Engineering	Palli Jodhpur	WIP

# OUR HAPPY CLIENTS



# CONTACT

**Sumer Singh Naruka** : 92511-57939

**Pradeep Singh Rana** : 96909-15195

**Ganesh Jat** : 9799583322

**Regd. Corporate Office** : Sidhivinayak Infraventures Pvt. Ltd,  
Flat No. 402, Jeet Apartment, Airport Road, Ratanada, Jodhpur (Raj),  
PIN no. 342001

**Contact No.** : 9251157939, 9690915195

**Email** : [sipljod@gmail.com](mailto:sipljod@gmail.com)

**Landline No** : 0291-2943507

**Website** : [www.sipljod.com](http://www.sipljod.com)

